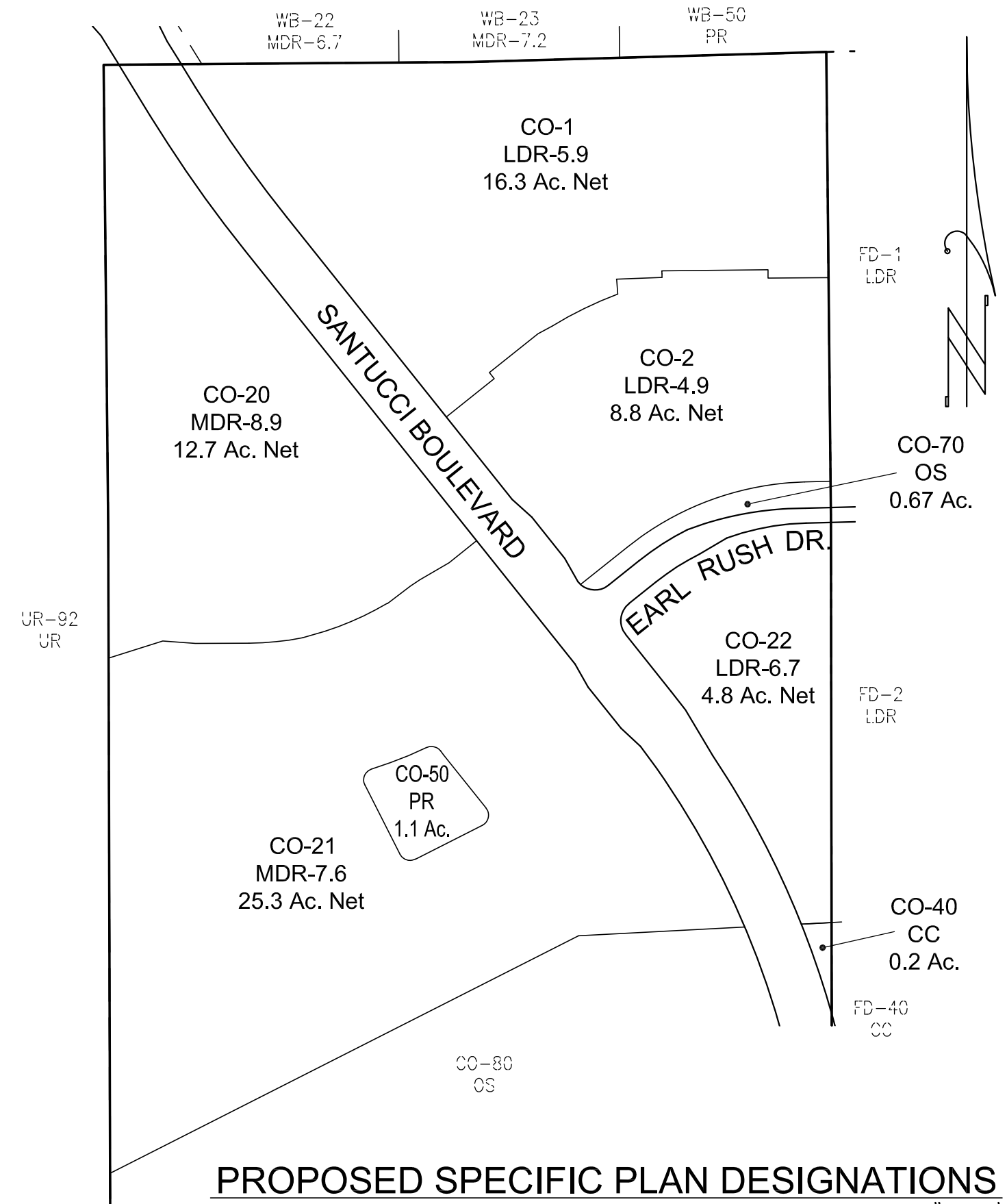


EXISTING SPECIFIC PLAN DESIGNATIONS

SCALE: 1"=300'



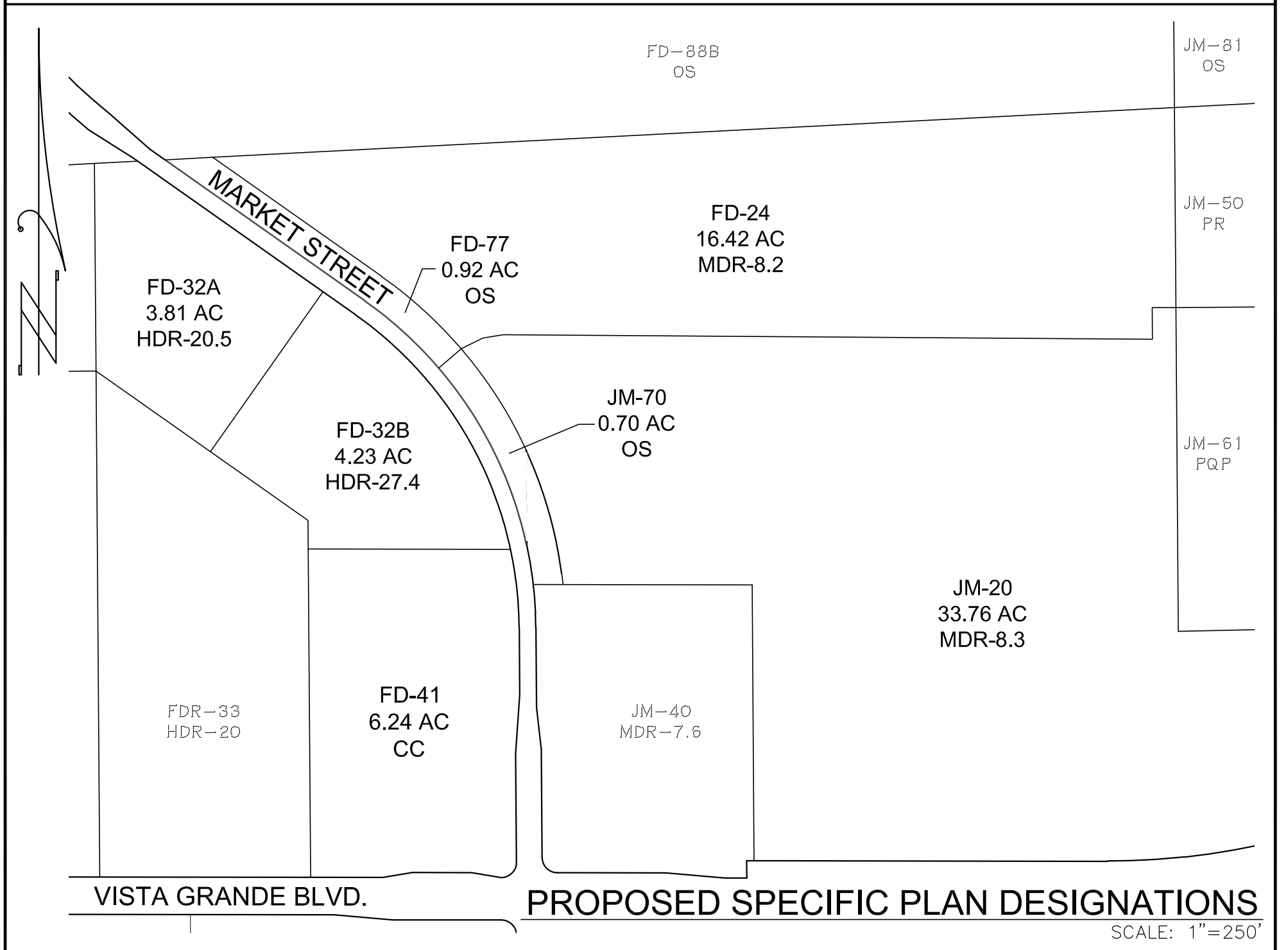
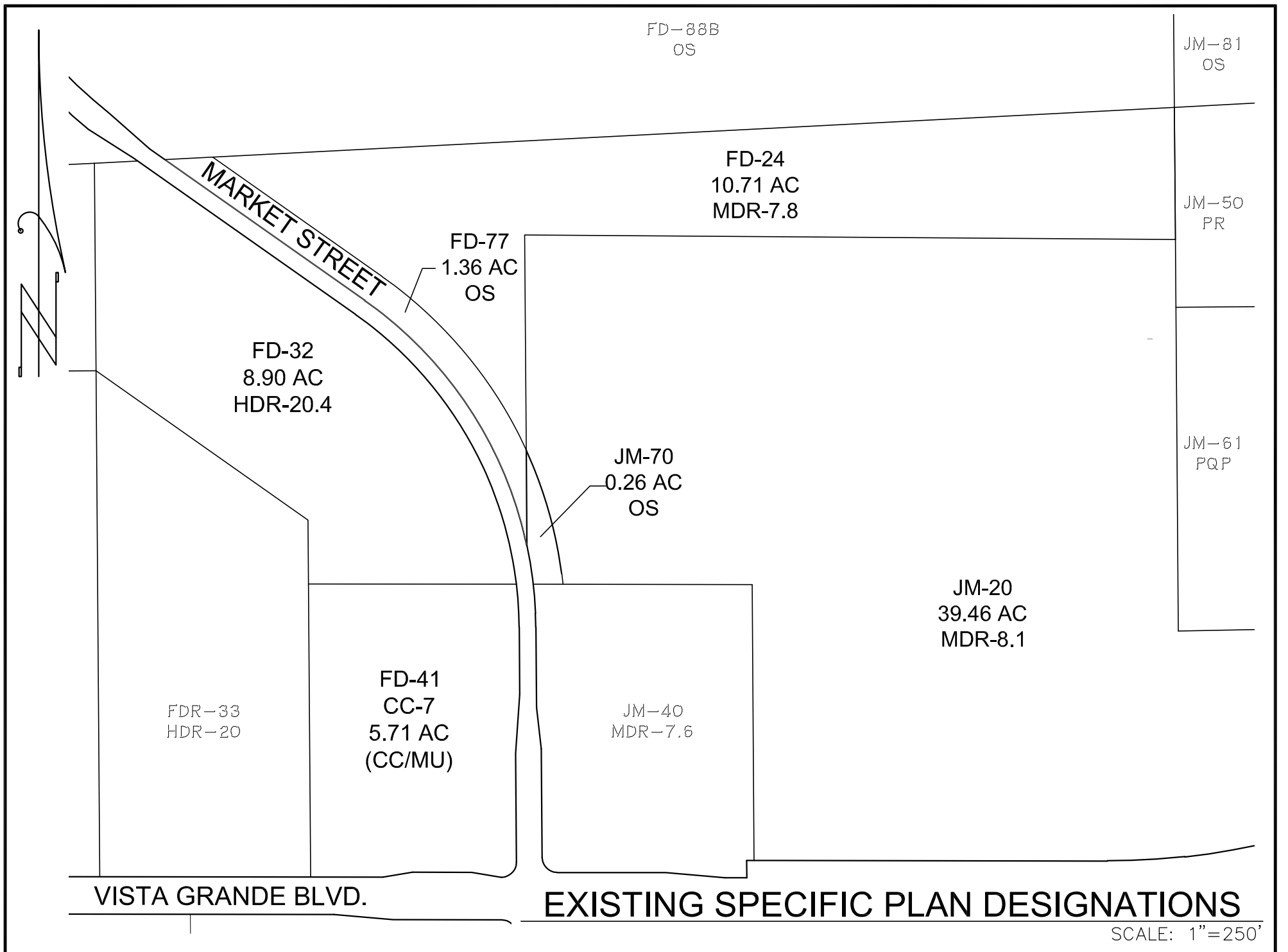
PROPOSED SPECIFIC PLAN DESIGNATIONS

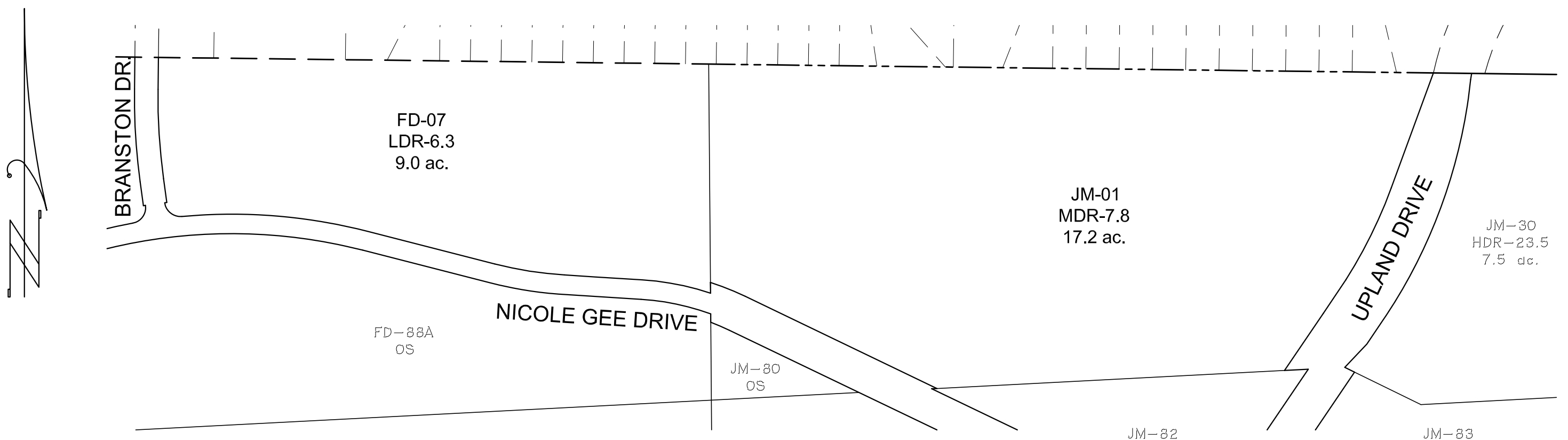
SCALE: 1"=300'

BW BAKER-WILLIAMS ENGINEERING GROUP
 Engineering / Surveying / Land Planning / Entitlement Processing / GPS Services
 6020 Rutland Drive, Suite 19 ~ Carmichael, CA 95608
 (916) 331-4338 ~ fax (916) 331-4430 ~ office@bwengineers.com

SCALE: 1"=300'
 JOB #: 18-03-010
 DATE: JUNE 2021

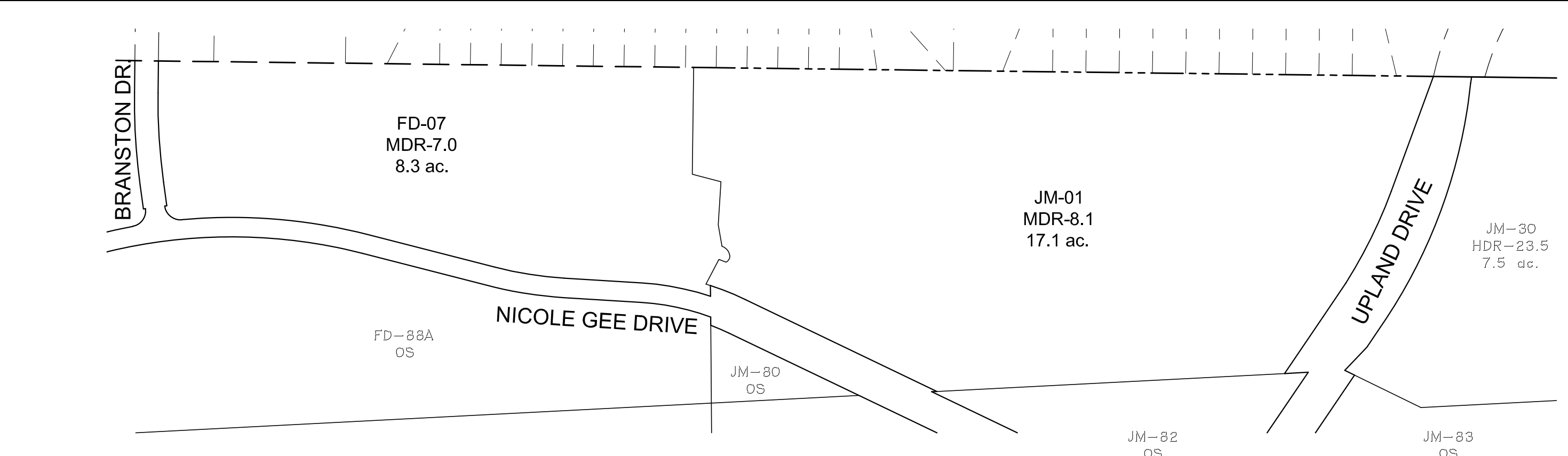
SPECIFIC PLAN AMENDMENT EXHIBIT
 THE VILLAGES at SIERRA VISTA
 PARCELS CO-01, CO-02, CO-20, CO-21, CO-22 & CO-40
 CITY of ROSEVILLE, CALIFORNIA





EXISTING SPECIFIC PLAN DESIGNATIONS

SCALE: 1"=200'



PROPOSED SPECIFIC PLAN DESIGNATIONS

SCALE: 1"=200'

SPECIFIC PLAN AMENDMENT EXHIBIT
 SVSP PARCELS JM-01 AND FD-7
 SCALE: 1"=200'
 JOB #: 20-06-027
 DATE: DEC., 2021
 CITY OF ROSEVILLE, CALIFORNIA

BW BAKER-WILLIAMS ENGINEERING GROUP
 Engineering / Surveying / Land Planning / Entitlement Processing / GPS Services
 6020 Rutland Drive, Suite 19 - Carmichael, CA 95608
 (916) 331-4335 - fax: (916) 331-4430 - office@bweengineers.com